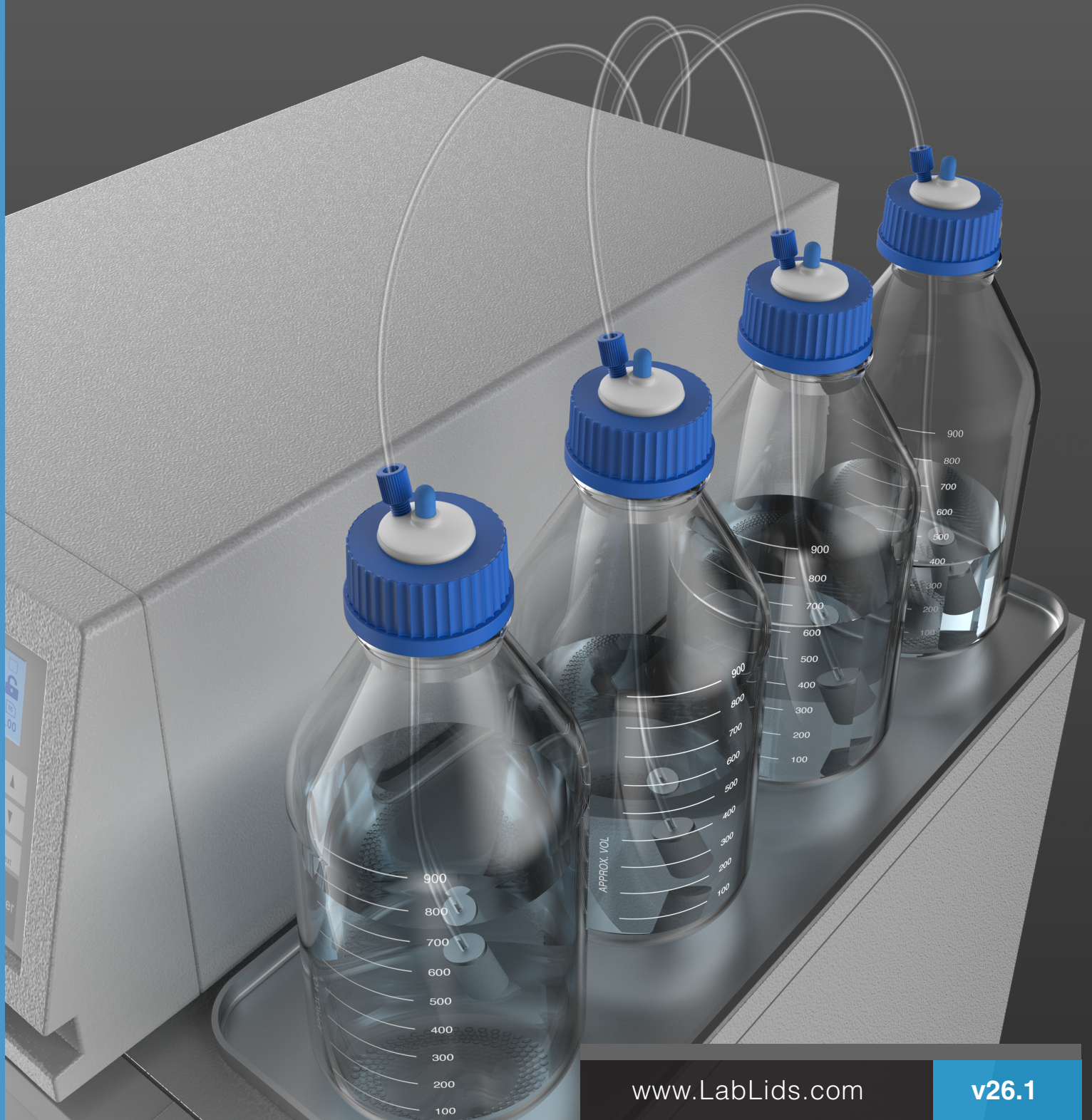




LabLids
SAFER CHEMICAL CONTAINMENT

Solvent Extraction

for laboratory instruments



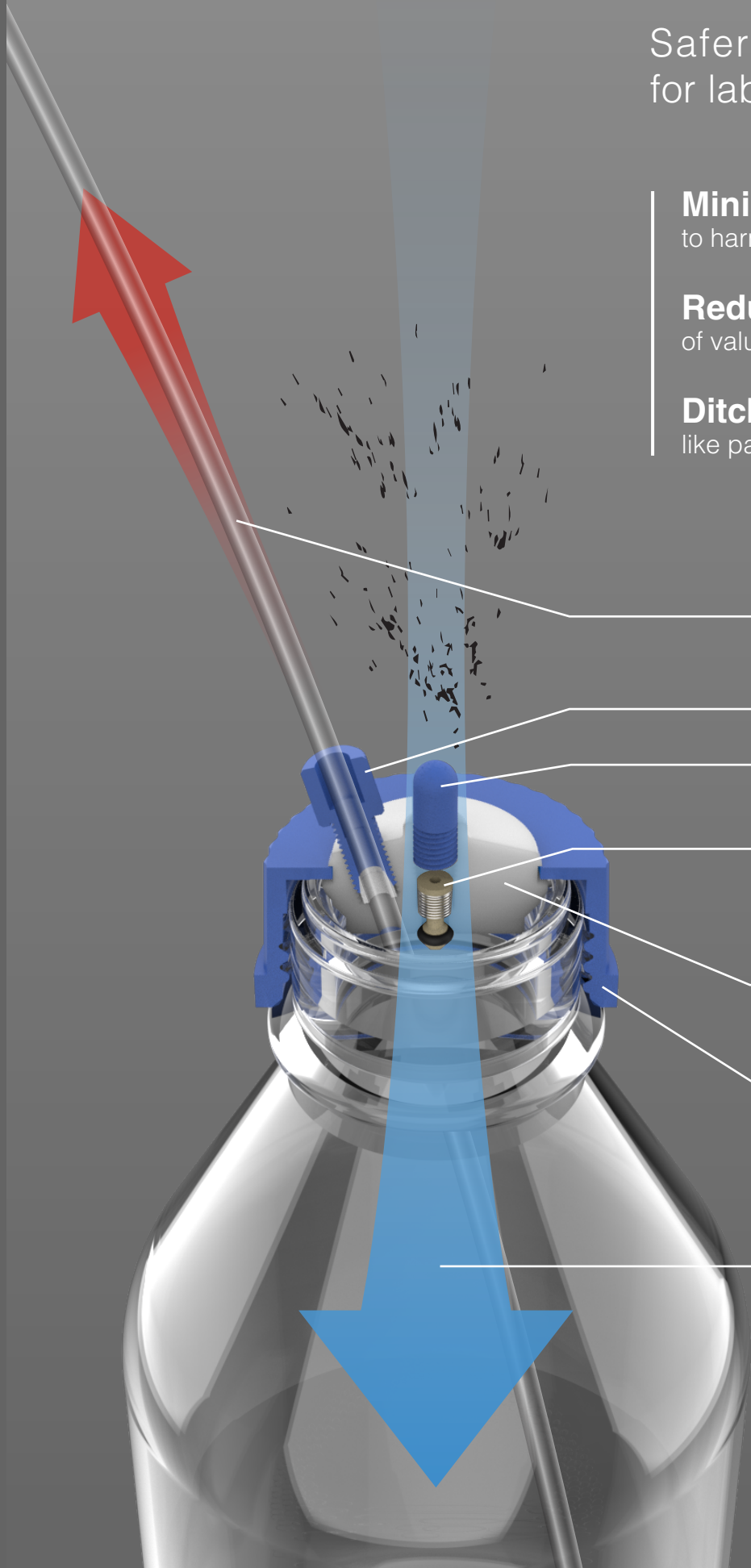
Closed Systems

Safer solvent extraction for laboratory instruments

Minimize exposure
to harmful fumes and vapors

Reduce evaporation
of valuable chemical reagents

Ditch outdated methods
like paraffin tape and foil



Solvent extraction to the instrument

Tubing connection

Particulate filter, threaded for easy replacement

One-way PEEK /SS316 check valve reduces solvent evaporation, with three elastomer seal options

Chemically resistant PTFE insert ensures compatibility with a wide range of lab solvents

Polypropylene collar rotates independently, protecting tubing from twisting or damage

Clean air enters through one-way check valve



Table of Contents

38-400 safety caps	04
For Wako, Cubitainer, space saver and F-style jugs	
GL38 safety caps	06
For 38-430 “GL” glass threaded bottles	
38-430 safety caps	08
For Nalgene and similar 38mm plastic bottles	
GL45 safety caps	10
For 45mm “GL” glass threaded bottles	
Accessories	12
Kits, adapters, and tubing connections	
Container Types	14
Reservoir thread sizes at 1:1 scale	

Many lab instruments (such as **HPLC**, LC-MS, FPLC, SFC, and others) rely on the use of volatile **organic solvents**. These chemicals can pose significant **health and safety concerns** for those working nearby.

Because these machines are “active” systems, continuously pumping solvents from reservoirs to the instrument and then to waste, a **dynamic containment solution** is essential for managing both pure reagents and waste effluent. This solution must balance controlled airflow in or out of containers with effective mitigation of both evaporation and solvent fumes.

The products listed here provide a **closed-system solution** to the problem of **Solvent Extraction**. For options to manage solvent effluents, please see our **Waste Collection** catalog

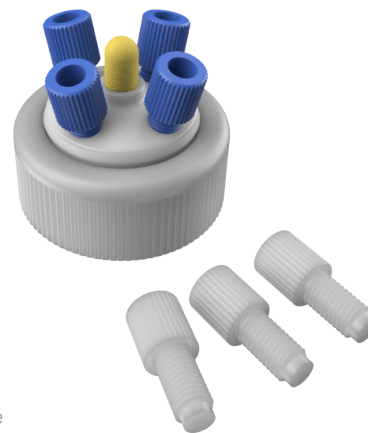
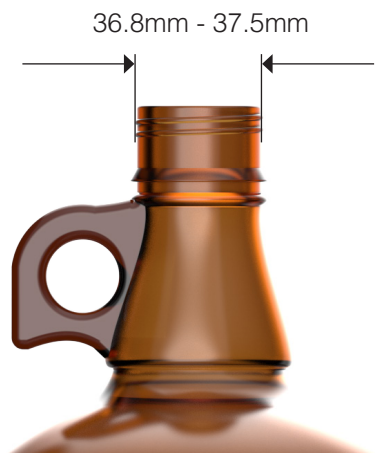
38-400 safety caps

For 38mm Wako, space saver, and F-style jugs



Bottle and thread type

As part of the Glass Packaging Institute (GPI) standards, the 38-400 thread type has become a cornerstone of modern packaging. Widely used across various industries, it appears in products such as spice jars, kombucha bottles, and cooking oil. In laboratory settings, it is trusted by brands like Wako Chemical for its airtight seal and dependable chemical storage. The 38-400 thread is also a common feature of plastic bottles, including 5L "Space Savers," Cubitainers, and 1-gallon F-style industrial jugs. Originally developed in the mid-20th century to standardize industrial packaging, it quickly became a preferred choice for its balance of security, reusability, and convenience. Whether safeguarding laboratory chemicals or keeping pantry items fresh, this simple yet innovative design continues to demonstrate the enduring impact of thoughtful engineering.



LL-38WX4T-VKF

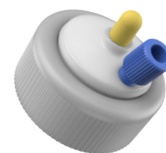
4-tube w/ FFKM valve
with fittings for 1/8" OD
tubing, 3 plugs

Part Number	Description	Valve	Ports
1-Tube Caps: with 1 Type A (1/4-28 UNF) port			
LL-38WX1T-VE	1 open port w/ EPDM valve	●	1A
LL-38WX1T-VV	1 open port w/ FKM valve	●	1A
LL-38WX1T-VK	1 open port w/ FFKM valve	●	1A
LL-38WX1T-VEF	1-tube w/ EPDM valve + fittings	●	1A
LL-38WX1T-VVF	1-tube w/ FKM valve + fittings	●	1A
LL-38WX1T-VKF	1-tube w/ FFKM valve + fittings	●	1A
2-Tube Caps: with 2 Type A (1/4-28 UNF) ports			
LL-38WX2T	2 open ports		2A
LL-38WX2T-F	2-tube w/fittings, 1 plug		2A
LL-38WX2T-VE	2 open ports w/ EPDM valve	●	2A
LL-38WX2T-VV	2 open ports w/ FKM valve	●	2A
LL-38WX2T-VK	2 open ports w/ FFKM valve	●	2A
LL-38WX2T-VEF	2-tube w/ EPDM valve + fittings, 1 plug	●	2A
LL-38WX2T-VVF	2-tube w/ FKM valve + fittings, 1 plug	●	2A
LL-38WX2T-VKF	2-tube w/ FFKM valve + fittings, 1 plug	●	2A
3-Tube Caps: with 3 Type A (1/4-28 UNF) ports			
LL-38WX3T	3 open ports		3A
LL-38WX3T-F	3-tube w/fittings, 2 plugs		3A
LL-38WX3T-VE	3 open ports w/ EPDM valve	●	3A
LL-38WX3T-VV	3 open ports w/ FKM valve	●	3A
LL-38WX3T-VK	3 open ports w/ FFKM valve	●	3A
LL-38WX3T-VEF	3-tube w/ EPDM valve + fittings, 2 plugs	●	3A
LL-38WX3T-VVF	3-tube w/ FKM valve + fittings, 2 plugs	●	3A
LL-38WX3T-VKF	3-tube w/ FFKM valve + fittings, 2 plugs	●	3A
4-Tube Caps: with 4 Type A (1/4-28 UNF) ports			
LL-38WX4T	4 open ports		4A
LL-38WX4T-F	4-tube w/fittings, 3 plugs		4A
LL-38WX4T-VE	4 open ports w/ EPDM valve	●	4A
LL-38WX4T-VV	4 open ports w/ FKM valve	●	4A
LL-38WX4T-VK	4 open ports w/ FFKM valve	●	4A
LL-38WX4T-VEF	4-tube w/ EPDM valve + fittings, 3 plugs	●	4A
LL-38WX4T-VVF	4-tube w/ FKM valve + fittings, 3 plugs	●	4A
LL-38WX4T-VKF	4-tube w/ FFKM valve + fittings, 3 plugs	●	4A

Note all fittings included with cap kits are sized for 1/8" OD tubing

1

Tube



● **LL-38WX1T-VE** : EPDM
 ● **LL-38WX1T-VV** : FKM
 ● **LL-38WX1T-VK** : FFKM
 1 open port w/ valve

● **LL-38WX1T-VEF** : EPDM
 ● **LL-38WX1T-VVF** : FKM
 ● **LL-38WX1T-VKF** : FFKM
 1-tube w/ valve + fitting

2

Tubes



LL-38WX2T
 2 open ports



LL-38WX2T-F
 2-tube w/ fittings
 1 plug



● **LL-38WX2T-VE** : EPDM
 ● **LL-38WX2T-VV** : FKM
 ● **LL-38WX2T-VK** : FFKM
 2 open ports w/ valve



● **LL-38WX2T-VEF** : EPDM
 ● **LL-38WX2T-VVF** : FKM
 ● **LL-38WX2T-VKF** : FFKM
 2-tube w/ valve + fittings
 1 plug

3

Tubes



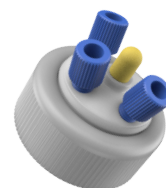
LL-38WX3T
 3 open ports



LL-38WX3T-F
 3-tube w/ fittings
 2 plugs



● **LL-38WX3T-VE** : EPDM
 ● **LL-38WX3T-VV** : FKM
 ● **LL-38WX3T-VK** : FFKM
 3 open ports w/ valve



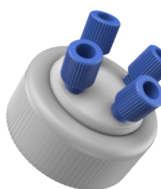
● **LL-38WX3T-VEF** : EPDM
 ● **LL-38WX3T-VVF** : FKM
 ● **LL-38WX3T-VKF** : FFKM
 3-tube w/ valve + fittings
 2 plugs

4

Tubes



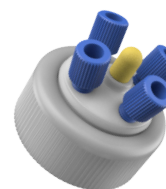
LL-38WX4T
 4 open ports



LL-38WX4T-F
 4-tube w/ fittings
 3 plugs



● **LL-38WX4T-VE** : EPDM
 ● **LL-38WX4T-VV** : FKM
 ● **LL-38WX4T-VK** : FFKM
 4 open ports w/ valve



● **LL-38WX4T-VEF** : EPDM
 ● **LL-38WX4T-VVF** : FKM
 ● **LL-38WX4T-VKF** : FFKM
 4-tube w/ valve + fittings
 3 plugs

Solvents	PTFE	PP	PEEK	SS	EPDM	FKM	FFKM	Compatible Valve
Acetone	A	A	A	A	A	D	A	● ●
Acetonitrile	A	AB	A	A	A	D	A	● ●
Chloroform	A	D	A	A	D	AB	A	● ●
Ethyl Acetate	A	A	A	A	AB	D	A	● ●
Hexane	A	BC	A	A	D	A	A	● ●
IPA	A	A	A	A	A	A	A	● ● ●
Methanol	A	A	A	A	A	C	A	● ●
Methyle Chloride	A	D	A	A	BC	B	A	●
THF	A	BC	A	A	D	D	A	●

A = EXCELLENT

B = GOOD

C = FAIR TO POOR

D = NOT RECOMMENDED

FILTER COLOR

● EPDM valve

● FKM valve

● FFKM valve

This information has been compiled from multiple sources and is intended as a general reference only. It is the responsibility of the user to verify the suitability of materials and solvents for their specific application. Data assumes room temperature use.

50µm Polyethylene particulate filters have been color-coded to denote the valve seal material. Filters are not intended for submersion in solvent.

GL38 safety caps

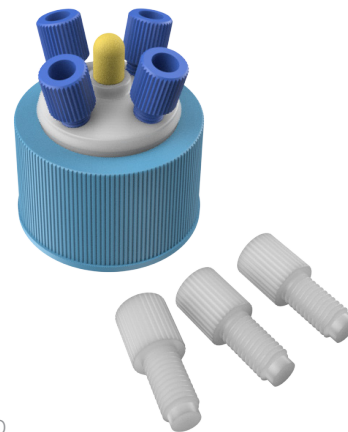
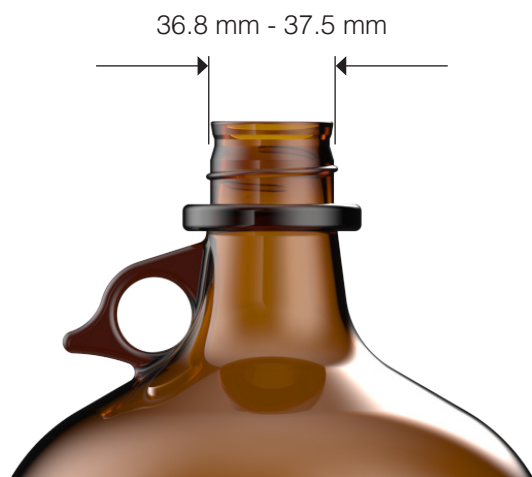
For 38-430 “GL” glass threaded bottles



Bottle and thread type

Part of the GL (glass laboratory) thread standard, the GL38 thread has become essential for packaging solvents in laboratory settings. It is commonly found on amber 4-liter glass bottles from chemical suppliers and is valued for its secure fit with airtight safety caps, ensuring the safe storage of volatile chemicals.

While the GL38 thread technically features a 38-430 thread finish, its slightly different height makes it incompatible with the 38-430 threads on plastic bottles. Specifically designed for glass containers, GL38 threads are a trusted choice for solvents, reagents, and other chemicals in both laboratory and industrial applications.



LL-38X4T-VKF

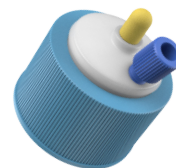
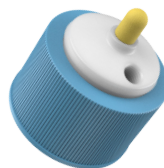
4-tube w/ FFKM valve
with fittings for 1/8" OD
tubing, 3 plugs

Part Number	Description	Valve	Ports
1-Tube Caps: with 1 Type A (1/4-28 UNF) port			
LL-38X1T-VE	1 open port w/ EPDM valve	●	1A
LL-38X1T-VV	1 open port w/ FKM valve	●	1A
LL-38X1T-VK	1 open port w/ FFKM valve	●	1A
LL-38X1T-VEF	1-tube w/ EPDM valve + fittings	●	1A
LL-38X1T-VVF	1-tube w/ FKM valve + fittings	●	1A
LL-38X1T-VKF	1-tube w/ FFKM valve + fittings	●	1A
2-Tube Caps: with 2 Type A (1/4-28 UNF) ports			
LL-38X2T	2 open ports		2A
LL-38X2T-F	2-tube w/fittings, 1 plug		2A
LL-38X2T-VE	2 open ports w/ EPDM valve	●	2A
LL-38X2T-VV	2 open ports w/ FKM valve	●	2A
LL-38X2T-VK	2 open ports w/ FFKM valve	●	2A
LL-38X2T-VEF	2-tube w/ EPDM valve + fittings, 1 plug	●	2A
LL-38X2T-VVF	2-tube w/ FKM valve + fittings, 1 plug	●	2A
LL-38X2T-VKF	2-tube w/ FFKM valve + fittings, 1 plug	●	2A
3-Tube Caps: with 3 Type A (1/4-28 UNF) ports			
LL-38X3T	3 open ports		3A
LL-38X3T-F	3-tube w/fittings, 2 plugs		3A
LL-38X3T-VE	3 open ports w/ EPDM valve	●	3A
LL-38X3T-VV	3 open ports w/ FKM valve	●	3A
LL-38X3T-VK	3 open ports w/ FFKM valve	●	3A
LL-38X3T-VEF	3-tube w/ EPDM valve + fittings, 2 plugs	●	3A
LL-38X3T-VVF	3-tube w/ FKM valve + fittings, 2 plugs	●	3A
LL-38X3T-VKF	3-tube w/ FFKM valve + fittings, 2 plugs	●	3A
4-Tube Caps: with 4 Type A (1/4-28 UNF) ports			
LL-38X4T	4 open ports		4A
LL-38X4T-F	4-tube w/fittings, 3 plugs		4A
LL-38X4T-VE	4 open ports w/ EPDM valve	●	4A
LL-38X4T-VV	4 open ports w/ FKM valve	●	4A
LL-38X4T-VK	4 open ports w/ FFKM valve	●	4A
LL-38X4T-VEF	4-tube w/ EPDM valve + fittings, 3 plugs	●	4A
LL-38X4T-VVF	4-tube w/ FKM valve + fittings, 3 plugs	●	4A
LL-38X4T-VKF	4-tube w/ FFKM valve + fittings, 3 plugs	●	4A

Note all fittings included with cap kits are sized for 1/8" OD tubing

1

Tube

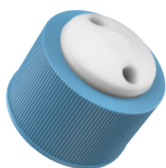


● **LL-38X1T-VE** : EPDM
 ● **LL-38X1T-VV** : FKM
 ● **LL-38X1T-VK** : FFKM
 1 open port w/ valve

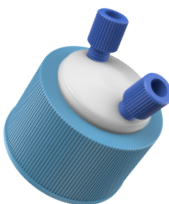
● **LL-38X1T-VEF** : EPDM
 ● **LL-38X1T-VVF** : FKM
 ● **LL-38X1T-VKF** : FFKM
 1-tube w/ valve + fitting

2

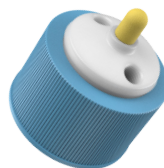
Tubes



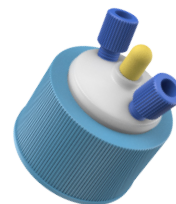
LL-38X2T
 2 open ports



LL-38X2T-F
 2-tube w/ fittings
 1 plug



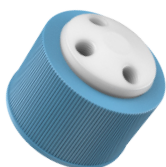
● **LL-38X2T-VE** : EPDM
 ● **LL-38X2T-VV** : FKM
 ● **LL-38X2T-VK** : FFKM
 2 open ports w/ valve



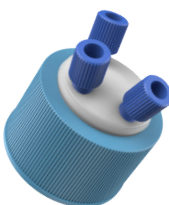
● **LL-38X2T-VEF** : EPDM
 ● **LL-38X2T-VVF** : FKM
 ● **LL-38X2T-VKF** : FFKM
 2-tube w/ valve + fittings
 1 plug

3

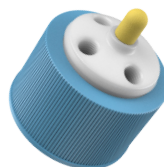
Tubes



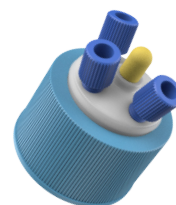
LL-38X3T
 3 open ports



LL-38X3T-F
 3-tube w/ fittings
 2 plugs



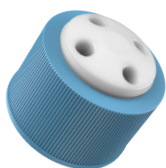
● **LL-38X3T-VE** : EPDM
 ● **LL-38X3T-VV** : FKM
 ● **LL-38X3T-VK** : FFKM
 3 open ports w/ valve



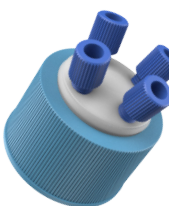
● **LL-38X3T-VEF** : EPDM
 ● **LL-38X3T-VVF** : FKM
 ● **LL-38X3T-VKF** : FFKM
 3-tube w/ valve + fittings
 2 plugs

4

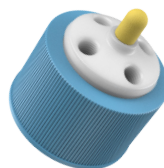
Tubes



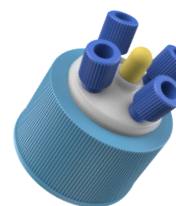
LL-38X4T
 4 open ports



LL-38X4T-F
 4-tube w/ fittings
 3 plugs



● **LL-38X4T-VE** : EPDM
 ● **LL-38X4T-VV** : FKM
 ● **LL-38X4T-VK** : FFKM
 4 open ports w/ valve



● **LL-38X4T-VEF** : EPDM
 ● **LL-38X4T-VVF** : FKM
 ● **LL-38X4T-VKF** : FFKM
 4-tube w/ valve + fittings
 3 plugs

Solvents	PTFE	PP	PEEK	SS	EPDM	FKM	FFKM	Compatible Valve
Acetone	A	A	A	A	A	D	A	● ●
Acetonitrile	A	AB	A	A	A	D	A	● ●
Chloroform	A	D	A	A	D	AB	A	● ●
Ethyl Acetate	A	A	A	A	AB	D	A	● ●
Hexane	A	BC	A	A	D	A	A	● ●
IPA	A	A	A	A	A	A	A	● ● ●
Methanol	A	A	A	A	A	C	A	● ●
Methyle Chloride	A	D	A	A	BC	B	A	●
THF	A	BC	A	A	D	D	A	●

A = EXCELLENT
 B = GOOD
 C = FAIR TO POOR
 D = NOT RECOMMENDED

FILTER COLOR
 ● EPDM valve
 ● FKM valve
 ● FFKM valve

This information has been compiled from multiple sources and is intended as a general reference only. It is the responsibility of the user to verify the suitability of materials and solvents for their specific application. Data assumes room temperature use.

50µm Polyethylene particulate filters have been color-coded to denote the valve seal material. Filters are not intended for submersion in solvent.

38-430 safety caps

For Nalgene® and similar plastic bottles



Bottle and thread type

The 38-430 thread finish is a widely used standard for plastic bottles in laboratories and industrial applications. Commonly found on containers like Nalgene bottles, this thread design is recognized for its durability and compatibility with a variety of caps and closures. Unlike glass threads, the 38-430 thread on plastic bottles often incorporates additional height and structure, making it incompatible with most GL38 caps. This thread finish is especially valued in laboratory settings, where plastic bottles are frequently used for storing reagents, buffers, and other solutions. Lightweight, shatterproof, and resistant to a range of chemicals, 38-430 threaded plastic bottles are a practical choice for environments requiring portability and durability.



LL-38NX4T-VKF

4-tube w/ FFKM valve
with fittings for 1/8" OD
tubing, 3 plugs

Part Number	Description	Valve	Ports
1-Tube Caps: with 1 Type A (1/4-28 UNF) port			
LL-38NX1T-VE	1 open port w/ EPDM valve	●	1A
LL-38NX1T-VV	1 open port w/ FKM valve	●	1A
LL-38NX1T-VK	1 open port w/ FFKM valve	●	1A
LL-38NX1T-VEF	1-tube w/ EPDM valve + fittings	●	1A
LL-38NX1T-VVF	1-tube w/ FKM valve + fittings	●	1A
LL-38NX1T-VKF	1-tube w/ FFKM valve + fittings	●	1A
2-Tube Caps: with 2 Type A (1/4-28 UNF) ports			
LL-38NX2T	2 open ports		2A
LL-38NX2T-F	2-tube w/fittings, 1 plug		2A
LL-38NX2T-VE	2 open ports w/ EPDM valve	●	2A
LL-38NX2T-VV	2 open ports w/ FKM valve	●	2A
LL-38NX2T-VK	2 open ports w/ FFKM valve	●	2A
LL-38NX2T-VEF	2-tube w/ EPDM valve + fittings, 1 plug	●	2A
LL-38NX2T-VVF	2-tube w/ FKM valve + fittings, 1 plug	●	2A
LL-38NX2T-VKF	2-tube w/ FFKM valve + fittings, 1 plug	●	2A
3-Tube Caps: with 3 Type A (1/4-28 UNF) ports			
LL-38NX3T	3 open ports		3A
LL-38NX3T-F	3-tube w/fittings, 2 plugs		3A
LL-38NX3T-VE	3 open ports w/ EPDM valve	●	3A
LL-38NX3T-VV	3 open ports w/ FKM valve	●	3A
LL-38NX3T-VK	3 open ports w/ FFKM valve	●	3A
LL-38NX3T-VEF	3-tube w/ EPDM valve + fittings, 2 plugs	●	3A
LL-38NX3T-VVF	3-tube w/ FKM valve + fittings, 2 plugs	●	3A
LL-38NX3T-VKF	3-tube w/ FFKM valve + fittings, 2 plugs	●	3A
4-Tube Caps: with 4 Type A (1/4-28 UNF) ports			
LL-38NX4T	4 open ports		4A
LL-38NX4T-F	4-tube w/fittings, 3 plugs		4A
LL-38NX4T-VE	4 open ports w/ EPDM valve	●	4A
LL-38NX4T-VV	4 open ports w/ FKM valve	●	4A
LL-38NX4T-VK	4 open ports w/ FFKM valve	●	4A
LL-38NX4T-VEF	4-tube w/ EPDM valve + fittings, 3 plugs	●	4A
LL-38NX4T-VVF	4-tube w/ FKM valve + fittings, 3 plugs	●	4A
LL-38NX4T-VKF	4-tube w/ FFKM valve + fittings, 3 plugs	●	4A

Note all fittings included with cap kits are sized for 1/8" OD tubing

1

Tube



● **LL-38NX1T-VE** : EPDM
 ● **LL-38NX1T-VV** : FKM
 ● **LL-38NX1T-VK** : FFKM
 1 open port w/ valve

● **LL-38NX1T-VEF** : EPDM
 ● **LL-38NX1T-VVF** : FKM
 ● **LL-38NX1T-VKF** : FFKM
 1-tube w/ valve + fitting

2

Tubes



LL-38NX2T
 2 open ports



LL-38NX2T-F
 2-tube w/fittings
 1 plug



● **LL-38NX2T-VE** : EPDM
 ● **LL-38NX2T-VV** : FKM
 ● **LL-38NX2T-VK** : FFKM
 2 open ports w/ valve



● **LL-38NX2T-VEF** : EPDM
 ● **LL-38NX2T-VVF** : FKM
 ● **LL-38NX2T-VKF** : FFKM
 2-tube w/ valve + fittings 1
 plug

3

Tubes



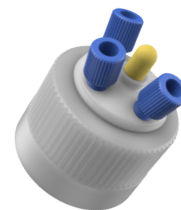
LL-38NX3T
 3 open ports



LL-38NX3T-F
 3-tube w/fittings
 2 plugs



● **LL-38NX3T-VE** : EPDM
 ● **LL-38NX3T-VV** : FKM
 ● **LL-38NX3T-VK** : FFKM
 3 open ports w/ valve



● **LL-38NX3T-VEF** : EPDM
 ● **LL-38NX3T-VVF** : FKM
 ● **LL-38NX3T-VKF** : FFKM
 3-tube w/ valve + fittings 2
 plugs

4

Tubes



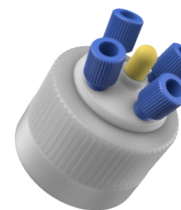
LL-38NX4T
 4 open ports



LL-38NX4T-F
 4-tube w/fittings
 3 plugs



● **LL-38NX4T-VE** : EPDM
 ● **LL-38NX4T-VV** : FKM
 ● **LL-38NX4T-VK** : FFKM
 4 open ports w/ valve



● **LL-38NX4T-VEF** : EPDM
 ● **LL-38NX4T-VVF** : FKM
 ● **LL-38NX4T-VKF** : FFKM
 4-tube w/ valve + fittings 3
 plugs

Solvents	PTFE	PP	PEEK	SS	EPDM	FKM	FFKM	Compatible Valve
Acetone	A	A	A	A	A	D	A	● ●
Acetonitrile	A	AB	A	A	A	D	A	● ●
Chloroform	A	D	A	A	D	AB	A	● ●
Ethyl Acetate	A	A	A	A	AB	D	A	● ●
Hexane	A	BC	A	A	D	A	A	● ●
IPA	A	A	A	A	A	A	A	● ● ●
Methanol	A	A	A	A	A	C	A	● ●
Methyle Chloride	A	D	A	A	BC	B	A	●
THF	A	BC	A	A	D	D	A	●

A = EXCELLENT

B = GOOD

C = FAIR TO POOR

D = NOT RECOMMENDED

FILTER COLOR

● EPDM valve

● FKM valve

● FFKM valve

This information has been compiled from multiple sources and is intended as a general reference only. It is the responsibility of the user to verify the suitability of materials and solvents for their specific application. Data assumes room temperature use.

50µm Polyethylene particulate filters have been color-coded to denote the valve seal material. Filters are not intended for submersion in solvent.

GL45 safety caps

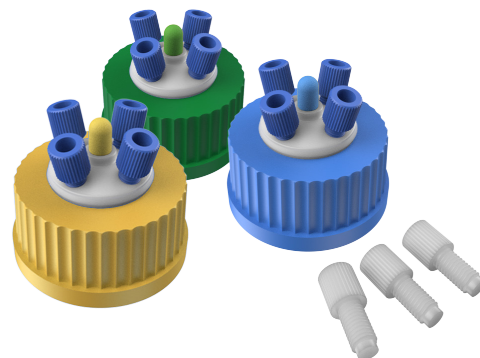
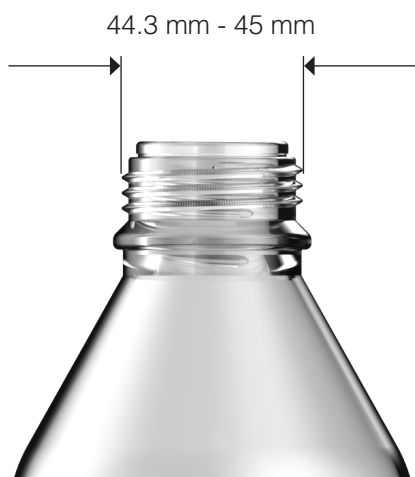
For 45mm “GL” glass threaded bottles



Bottle and thread type

Following the GL (glass laboratory) standard, the GL45 thread finish is a staple in laboratory glassware, recognized for its versatility and reliability across a wide range of applications. Found on glass bottles of various sizes—from small reagent containers to large solvent bottles—the GL45 thread is designed to ensure a secure, airtight seal, making it ideal for storing sensitive or volatile chemicals.

What sets the GL45 thread apart is its standardized design, which promotes compatibility across different manufacturers. This feature has made it a global favorite in laboratories, streamlining the interchangeability of caps, adapters, and accessories.



GL45 Caps w/ valve + fittings

4-tube cap kits w/ EPDM, FKM, or FFKM seal materials, with fittings for 1/8" OD tubing, 3 plugs

Part Number	Description	Valve	Ports
1-Tube Caps: with 1 Type A (1/4-28 UNF) port			
LL-45X1T-VE	1 open port w/ EPDM valve	●	1A
LL-45X1T-VV	1 open port w/ FKM valve	●	1A
LL-45X1T-VK	1 open port w/ FFKM valve	●	1A
LL-45X1T-VEF	1-tube w/ EPDM valve + fittings	●	1A
LL-45X1T-VVF	1-tube w/ FKM valve + fittings	●	1A
LL-45X1T-VKVF	1-tube w/ FFKM valve + fittings	●	1A
2-Tube Caps: with 2 Type A (1/4-28 UNF) ports			
LL-45X2T	2 open ports		2A
LL-45X2T-F	2-tube w/fittings, 1 plug		2A
LL-45X2T-VE	2 open ports w/ EPDM valve	●	2A
LL-45X2T-VV	2 open ports w/ FKM valve	●	2A
LL-45X2T-VK	2 open ports w/ FFKM valve	●	2A
LL-45X2T-VEF	2-tube w/ EPDM valve + fittings, 1 plug	●	2A
LL-45X2T-VVF	2-tube w/ FKM valve + fittings, 1 plug	●	2A
LL-45X2T-VKVF	2-tube w/ FFKM valve + fittings, 1 plug	●	2A
3-Tube Caps: with 3 Type A (1/4-28 UNF) ports			
LL-45X3T	3 open ports		3A
LL-45X3T-F	3-tube w/fittings, 2 plugs		3A
LL-45X3T-VE	3 open ports w/ EPDM valve	●	3A
LL-45X3T-VV	3 open ports w/ FKM valve	●	3A
LL-45X3T-VK	3 open ports w/ FFKM valve	●	3A
LL-45X3T-VEF	3-tube w/ EPDM valve + fittings, 2 plugs	●	3A
LL-45X3T-VVF	3-tube w/ FKM valve + fittings, 2 plugs	●	3A
LL-45X3T-VKVF	3-tube w/ FFKM valve + fittings, 2 plugs	●	3A
4-Tube Caps: with 4 Type A (1/4-28 UNF) ports			
LL-45X4T	4 open ports		4A
LL-45X4T-F	4-tube w/fittings, 3 plugs		4A
LL-45X4T-VE	4 open ports w/ EPDM valve	●	4A
LL-45X4T-VV	4 open ports w/ FKM valve	●	4A
LL-45X4T-VK	4 open ports w/ FFKM valve	●	4A
LL-45X4T-VEF	4-tube w/ EPDM valve + fittings, 3 plugs	●	4A
LL-45X4T-VVF	4-tube w/ FKM valve + fittings, 3 plugs	●	4A
LL-45X4T-VKVF	4-tube w/ FFKM valve + fittings, 3 plugs	●	4A

Note all fittings included with cap kits are sized for 1/8" OD tubing. Caps are designed to seal onto only glass GL45 bottles, not plastic.

1

Tube



● LL-45X1T-VE : EPDM
 ● LL-45X1T-VV : FKM
 ● LL-45X1T-VK : FFKM
 1 open port w/ valve

● LL-45X1T-VVF : EPDM
 ● LL-45X1T-VVF : FKM
 ● LL-45X1T-VKF : FFKM
 1-tube w/ valve + fitting

2

Tubes



LL-45X2T
 2 open ports



LL-45X2T-F
 2-tube w/ fittings
 1 plug



● LL-45X2T-VE : EPDM
 ● LL-45X2T-VV : FKM
 ● LL-45X2T-VK : FFKM
 2 open ports w/ valve



● LL-45X2T-VVF : EPDM
 ● LL-45X2T-VVF : FKM
 ● LL-45X2T-VKF : FFKM
 2-tube w/ valve + fittings
 1 plug

3

Tubes



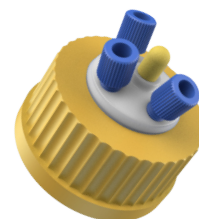
LL-45X3T
 3 open ports



LL-45X3T-F
 3-tube w/ fittings
 2 plugs



● LL-45X3T-VE : EPDM
 ● LL-45X3T-VV : FKM
 ● LL-45X3T-VK : FFKM
 3 open ports w/ valve



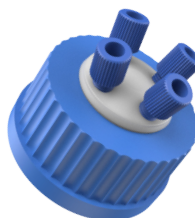
● LL-45X3T-VVF : EPDM
 ● LL-45X3T-VVF : FKM
 ● LL-45X3T-VKF : FFKM
 3-tube w/ valve + fittings
 2 plugs

4

Tubes



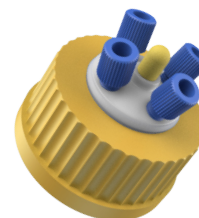
LL-45X4T
 4 open ports



LL-45X4T-F
 4-tube w/ fittings
 3 plugs



● LL-45X4T-VE : EPDM
 ● LL-45X4T-VV : FKM
 ● LL-45X4T-VK : FFKM
 4 open ports w/ valve



● LL-45X4T-VVF : EPDM
 ● LL-45X4T-VVF : FKM
 ● LL-45X4T-VKF : FFKM
 4-tube w/ valve + fittings
 3 plugs

Solvents	PTFE	PP	PEEK	SS	EPDM	FKM	FFKM	Compatible Valve
Acetone	A	A	A	A	A	D	A	● ●
Acetonitrile	A	AB	A	A	A	D	A	● ●
Chloroform	A	D	A	A	D	AB	A	● ●
Ethyl Acetate	A	A	A	A	AB	D	A	● ●
Hexane	A	BC	A	A	D	A	A	● ●
IPA	A	A	A	A	A	A	A	● ● ●
Methanol	A	A	A	A	A	C	A	● ●
Methyle Chloride	A	D	A	A	BC	B	A	●
THF	A	BC	A	A	D	D	A	●

A = EXCELLENT

B = GOOD

C = FAIR TO POOR

D = NOT RECOMMENDED

FILTER COLOR

● EPDM valve

● FKM valve

● FFKM valve

This information has been compiled from multiple sources and is intended as a general reference only. It is the responsibility of the user to verify the suitability of materials and solvents for their specific application. Data assumes room temperature use.

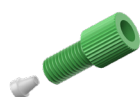
GL45 cap collars and particulate filters have been color-coded to denote the valve seal material. Filters are not intended for submersion in solvent.

Fittings & Filters

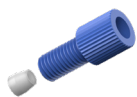
Tubing Connections, dust protection

Attach instrument tubing to safety caps using the flangeless connections shown below. These fittings, supplied in Polypropylene, feature Type A (1/4-28 UNF) threads with bottom-sealing ferrules. They are color-coded to correspond to various tubing diameters for easy identification. White plugs, made from chemically inert PTFE, are provided to seal unused ports.

To help maintain solvent purity, our safety caps with integrated evaporation control include replaceable threaded particulate filters above the valve. These filters are supplied in various colors to identify the valve seal material of the cap (EPDM, FKM, or FFKM). Purchase colored spares as needed or replace on a schedule. A plain white option is also available. All filters are made from 50µm polyethylene and are supplied in packs of four. Please note that these filters are not intended for submersion in solvent or for sparging applications.



LL-CPA16X
1/16" OD Tubing, 10/PK



LL-CPA32X
1/8" OD Tubing, 10/PK



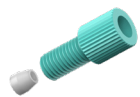
LL-CPA20X
2.0mm OD Tubing, 10/PK



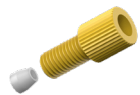
LL-PXAX
Plug for Type A Ports
10/PK



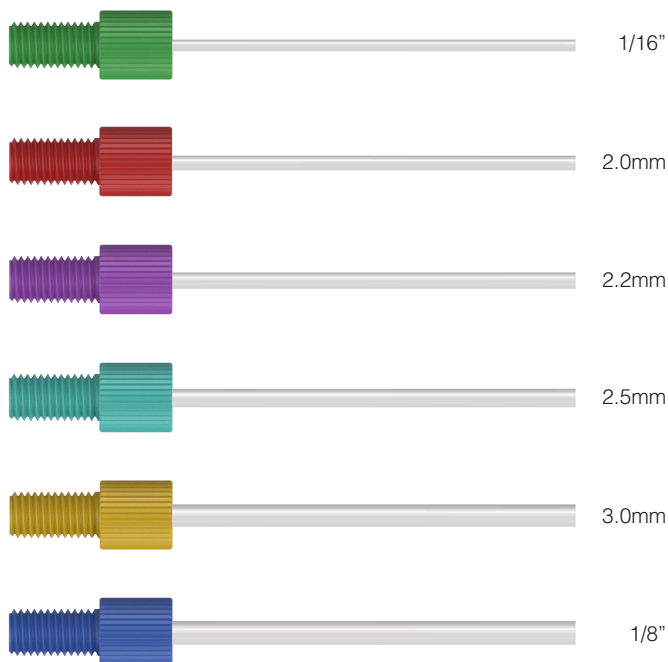
LL-CPA22X
2.2mm OD Tubing, 10/PK



LL-CPA25X
2.5mm OD Tubing, 10/PK



LL-CPA30X
3.0mm OD Tubing, 10/PK



Replacement particulate filters



LL-FRHY-A
Yellow PE filter
50µm, 4/PK



LL-FRHB-A
Blue PE filter
50µm, 4/PK



LL-FRHG-A
Green PE filter
50µm, 4/PK



LL-FRHR-A
Red PE filter
50µm, 4/PK



LL-FRHW-A
White PE filter
50µm, 4/PK

Part Number	Description	U/M	Material
Tubing Connections: Type A (1/4-28 UNF)			
LL-CPA16X	1/16" OD Tubing	10/PK	PP
LL-CPA20X	2.0mm OD Tubing	10/PK	PP
LL-CPA22X	2.2mm OD Tubing	10/PK	PP
LL-CPA25X	2.5mm OD Tubing	10/PK	PP
LL-CPA30X	3.0mm OD Tubing	10/PK	PP
LL-CPA32X	1/8" OD Tubing	10/PK	PP
Plugs: Type A (1/4-28 UNF)			
LL-PXAX	Plug for Type A Ports	10/PK	PP
Replacement Filters			
LL-FRHY-A	Yellow 50µm filter	4/PK	PE
LL-FRHR-A	Red 50µm filter	4/PK	PE
LL-FRHB-A	Blue 50µm filter	4/PK	PE
LL-FRHG-A	Green 50µm filter	4/PK	PE
LL-FRHW-A	White 50µm filter	4/PK	PE

Kits & Accessories

GL45 Cap Kits and bottle thread adapters

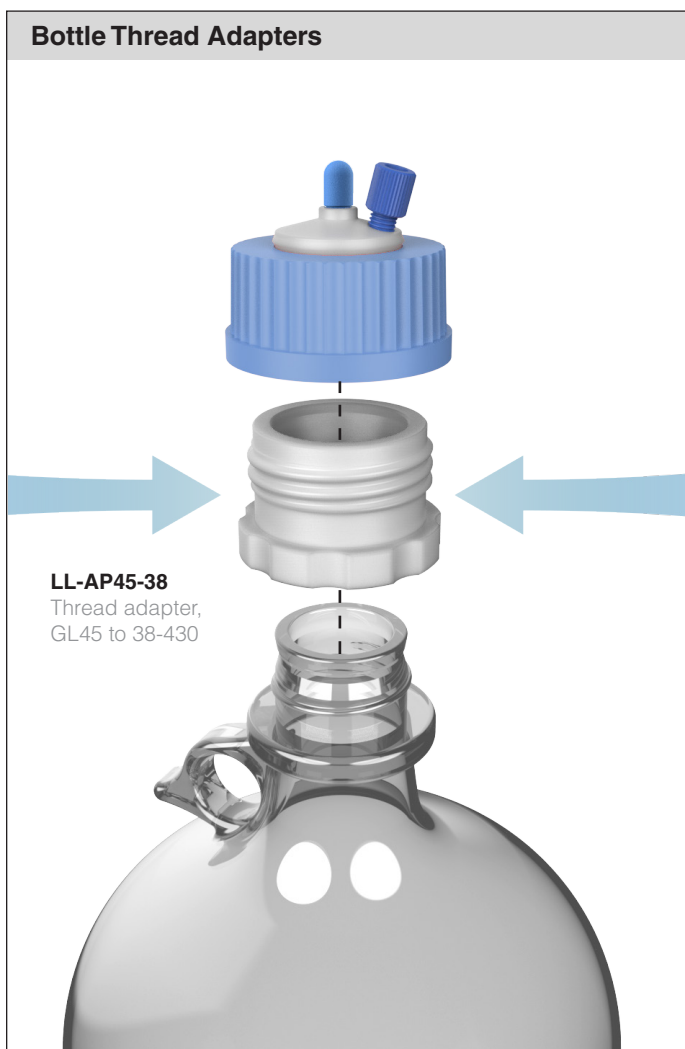
Purchase boxed sets of GL45 safety caps for convenient ordering or for use with quaternary HPLC systems. Each kit includes fittings for 1/8" OD tubing, plugs for unused ports, and four caps. Options include caps for 2 or 4 tubes, and with integrated evaporation control valves in either EPDM (suitable for Reverse Phase HPLC) or FFKM (compatible with both Normal Phase and Reverse Phase HPLC). We also offer multi-colored cap kits for easier identification of solvent bottles, with four caps in red, blue, green, and yellow.

When it helps to have a single safety cap fit different bottle types, use a thread adapter for a versatile solution. We offer polypropylene adapters to convert GL45 caps to 38-430 threads (compatible with both glass and plastic bottles) and to S40 glass bottles.



GL45 CAP KITS

Color-coded 4-packs with tubing connections and plugs included



Part Number	Description	Valve
GL45 Cap Kits		
LL-K45E2B	4x GL45 kit, 2-port, blue	EPDM
LL-K45E4B	4x GL45 kit, 4-port, blue	EPDM
LL-K45K2Y	4x GL45 kit, 2-port, yellow	FFKM
LL-K45K4Y	4x GL45 kit, 4-port, yellow	FFKM
LL-K45E2M	4x GL45 kit, 2-port, multi-color	EPDM
LL-K45E4M	4x GL45 kit, 4-port, multi-color	EPDM
LL-K45K2M	4x GL45 kit, 2-port, multi-color	FFKM
LL-K45K4M	4x GL45 kit, 4-port, multi-color	FFKM
Bottle Thread Adapters		
LL-AP45-38	Thread adapter, GL45 to 38-430	PP
LL-AP45-40	Thread adapter, GL45 to S40	PP

Container Types

A closer look at container threads and dimensions, at 1:1 scale



38-400 shallow thread (Wako / Cubitainer)
Scale 1:1



GL38 (38-430) glass thread
Scale 1:1



38-430 plastic thread (Nalgene and similar)
Scale 1:1



GL45 glass thread
Scale 1:1

