

Precision Needle Valve with Multidial

MODEL 2412M SERIES



Applicable fluids **Gas** N₂, Air, H₂, He, Ar, O₂, CO₂, etc. **Liquid** H₂O

Max. flow rate **Gas** 5mL/min to 100L/min (Air at 20°C, 0.1MPa differential pressure) **Liquid** 5mL/min to 2L/min (H₂O at 20°C, 0.1MPa differential pressure)

* Up to the working conditions. For details, see the reference data.

- Capable of setting flow rate at the scale of multidial
- Stable control of minute flow rate
- Superior control performance by a non-rotating structure
- Capable of selecting optimum controllability according to the working conditions with wide variety of needles



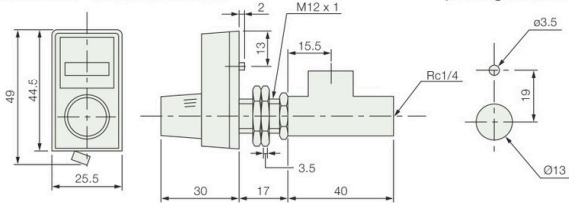
2412MAT



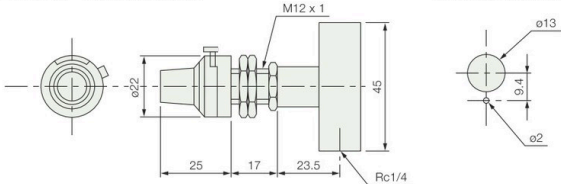
2412MBL

Dimensions

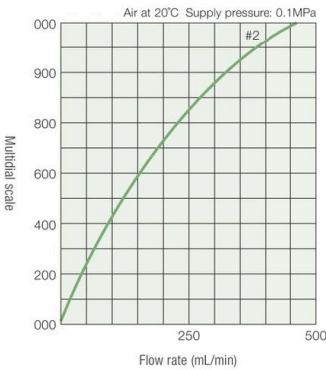
◀◀2412MAL▶▶ A...Standard multidial (Cutting dimensions)



◀◀2412MBT▶▶ B...Round multidial (Cutting dimensions)



Example of flow rate characteristics



Standard Specifications

MODEL	2412M	
Applicable fluids	N ₂ , Air, H ₂ , He, Ar, O ₂ , CO ₂ , etc.	H ₂ O
Number of turns of regulating screw	Approx. 12 turns	
Max. working pressure	1MPa(G)	
Max. working temperature	SS: 120°C B: 70°C	
Materials of parts in contact with fluid	SS: SUS316, PCTFE, FKM B: Brass, POM, NBR, SUS316	
Connection	Rc1/4	
Weight	Approx. 170g	

* Dial scale range: 000 to 999 (no scale calibration)
* The 2412M and 2412 have opposite screw turning directions to each other.

Ordering

MODEL	Multidial	Shape	Material	Connection	Fluid	Inlet / outlet differential pressure	Max. flow rate
2412M	A: Standard B: Round type	L T	SS: SUS316 B: Brass	1/4: Rc1/4 1/8: Rc1/8			
2412M	A	L	SS	1/4	N ₂	0.3MPa	5L/min

* We will select an optimum needle number based on the conditions such as the pressure, fluid and flow rate. Use the ratings table only as reference.
* See the 2412 for the flow rating.