

UB Series

General Information

Heavy duty high pressure Ball valve 10,000 psi rated

Alco are aware of the ever increasing operating pressures demanded by industry, and for this reason have developed the "UB" range of valves to accommodate these stringent requirements. The UB series high pressure valve has a working pressure of 10,000 psi with a body test at (15,000 psi). The UB Series is a tried and tested rugged design for high pressure applications. It comes with panel mounting holes and stainless steel handle as standard. Service / repair kits are available to prolong service / field life. Many options available such as locking device.

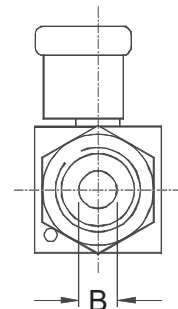
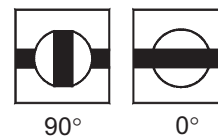
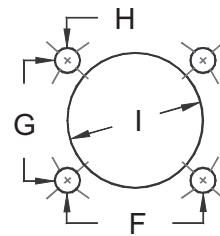
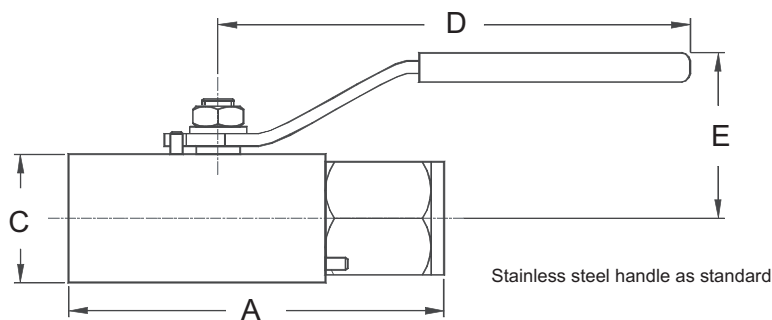


Design Features

- 2 piece design for safety.
- Quick 90° operation, lever handle standard.
- Bi-directional floating ball design to ensure leak-proof shut-off on pressure or vacuum.
- Anti-blowout stem for safety.
- Available with 4-panel mounting holes M4 x 10 deep, can be actuated (if specified)
- Available in 316ss / Duplex / Monel.
- Temperature range -46°C to 230°C (Pressures may vary)
- Available with socket weld or butt weld ends.
- Renewable seats and seals for long life.
- Repair kits available to prolong valve life.
- Floating ball design for first time seal.
- Available FULL bore or STANDARD bore.
- Full material traceability.
- Materials of construction can be supplied to meet the requirements of NACE MR-01-75.

VALVE SIZE	F	G	H	I
1/4"-1/2"	27	24	5	27

4 – off M4 x 10 Mounting Holes



Part Numbers

St/St Part No.	Connections Size	A	B (Bore)	C	D	E	Cv	Kv	Weight (kgs)
UB2NS	1/4" NPT	89	9.5	32	115	39	6.3	5.4	0.7
UB3NS	3/8" NPT	92	9.5	32	115	39	8.6	7.4	0.7
UB4NS	1/2" NPT	95	9.5	32	115	39	5.5	4.7	0.7
UB6NS	3/4" NPT	110	12.7	38	150	46	10.2	8.7	1.0

For BSPT threads change 'N' to 'T' i.e. UB4TS
For BSPP version change "N" to "P" i.e. UB4PS

Note: check the international standards for pressure limitations of certain threads before you specify a thread form or end connection

Seat materials: 10,000psi = Peek® Seal materials: Body = PTFE - Stem = Peek

Dims are in mm (appx)

See technical section for important additional valve data



UK Tel: (44) 1484 710511

USA Tel: (1) 281 564 2526

Canada Tel: (1) 519 767 6655

Singapore Tel: (65) 6735 0526

www.alco-valves.com